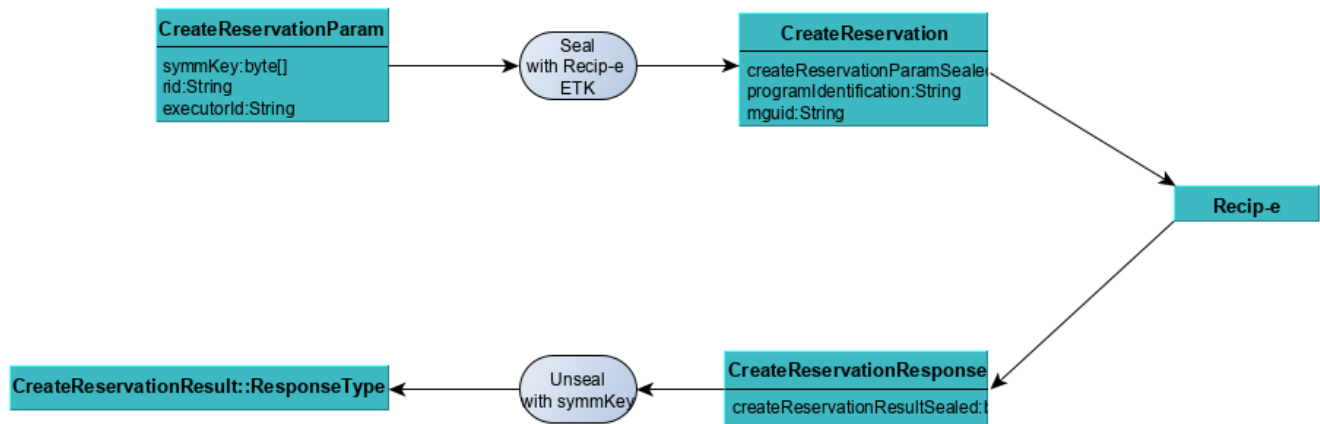


## 1. Overview operations

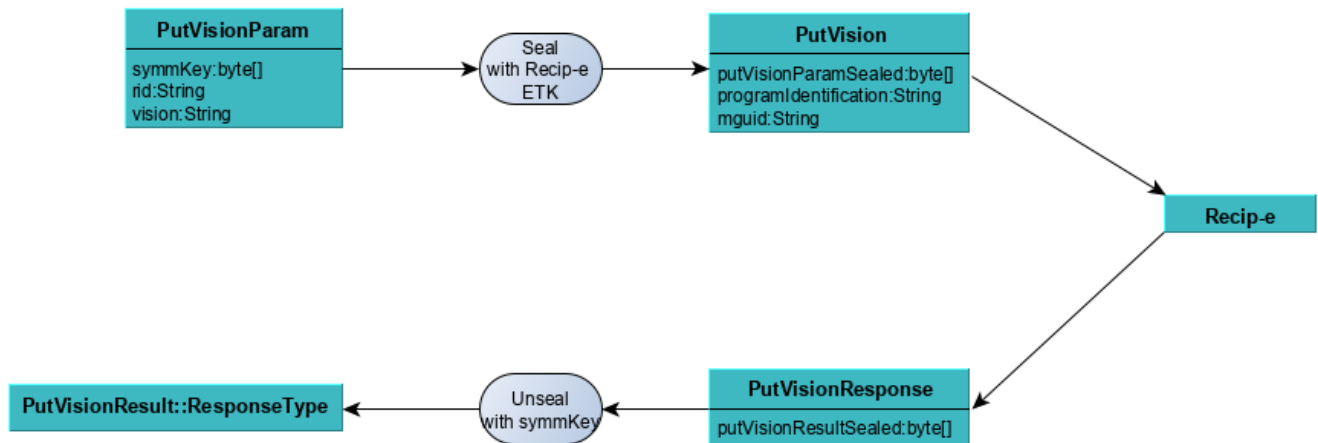
### 1. CREATERESERVATION

<b>Operation Name</b>	<b>CreateReservation(CreateReservation)</b>			
<b>Class Name</b>	<b>PatientIntegrationModuleV4</b>			
<b>Description</b>	This operation stores a reservation for a given Recip-e identifier. This is only allowed for prescriptions which are NotDelivered.			
<b>Errors</b>	Specific exceptiondetails are returned in the encrypted part of the response. See <i>StatusType.message</i> . Technical Services Exception such as a Connection failure to the Recip-e server are caught by eHealth and translated into a SOA-fault.			
<b>Inputs Integration Module</b>	<b>Request-entity</b>	<b>Attribute</b>	<b>Type</b>	<b>Description</b>
	CreateReservationParam	symmKey	Byte []	The symmetric key to be used by Recip-e to encrpt the response
		rid	String	The Recip-e identifier to update
		executorId	String	The executor identifier
		emailAddress	String	The email address
		telephoneNumber	String	The telephone number
		contactPreference	contactPreference	The preferred contact. (possible values are defined in the recipe-core.xsd file under the simpleType: contactPreference)
	CreateReservation	CreateReservationParamSealed	Byte[]	The CreateReservationParam-object sealed with the Recip-e ETK
		programIdentification	String	The identifier of the calling patient program
		mguid	String	The mguid to identify the request
<b>Output Integration Module</b>	<b>Response-entity</b>	<b>Attribute</b>	<b>Type</b>	<b>Description</b>
	CreateReservationResponse	CreateReservationResultSealed	Byte []	Sealed byte representation of the CreateReservationResult-object. Unseal with the symmetric key from the CreateReservationParam-object.
	CreateReservationResult	status	StatusType	Contains the StatusType-object
	StatusType	code	String	100: ok 300: error occurred
		messageCode	String	The technical code of the error message e.g. error.validation.x.y.z
		messages	String	localised message of the technical code in different languages as a
		statusUpdater	String	The last statusupdater in case an operation is not permitted
		prescriptionStatus	String	the current PrescriptionStatus



## 2. PUTVISIONFORPATIENT

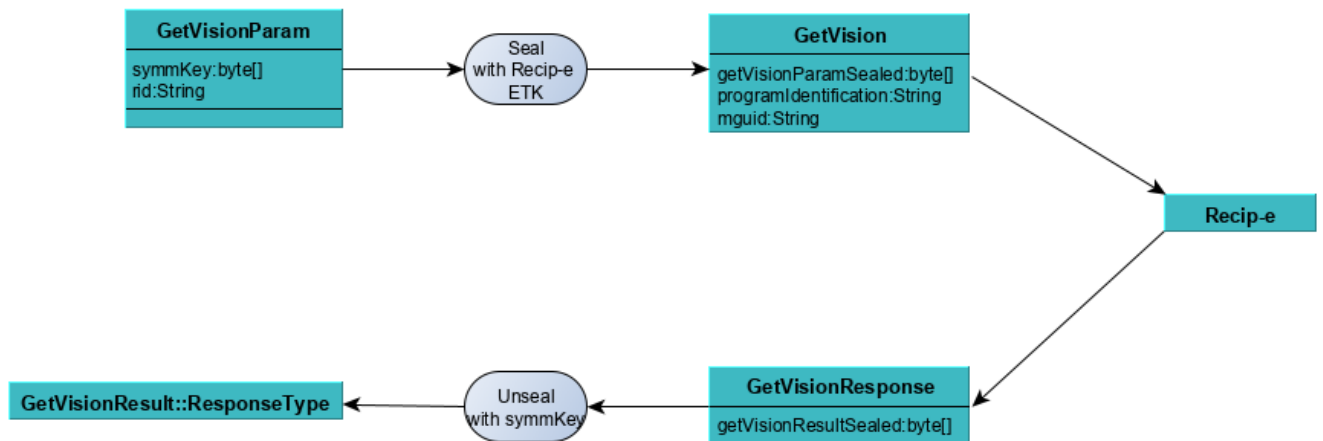
Operation	<b>PutVisionForPatient(PutVisionForPatient)</b>			
Class Name	<b>PatientIntegrationModuleV4</b>			
Description	<p>This operation sets the vision for a given prescription. Possible values for the vision are:</p> <ul style="list-style-type: none"> <li>Null: visible for all pharmacies</li> <li>Value with structure: Id-Quality. Type: visibility for the given prescription:               <ul style="list-style-type: none"> <li>Id: Nihii value of the executor 62599147</li> <li>Quality: value is PHARMACY</li> <li>Type: String with value NIHII</li> <li></li> </ul> </li> </ul> <p style="text-align: center;">➔ For example: 62599147-PHARMACY. NIHII</p> <li>Locked: only visible in the pharmacy where the patient presents the (paper) proof of prescription.</li>			
Errors	<p>Specific exception details are returned in the encrypted part of the response. See <i>StatusType.message</i>. Technical Services Exception such as a Connection failure to the Recip-e server are caught by eHealth and translated into a SOA-fault.</p>			
Inputs Integration Module	Request-entity	Attribute	Type	Description
	PutVisionForPatientParam	symmKey	Byte []	The symmetric key to be used by Recip-e to encrypt the response
		rid	String	The Recip-e identifier to update
		vision	String	The preferred vision value
	PutVisionForPatient	putVisionForPatientParamSealed	Byte[]	The PutVisionForPatientParam -object sealed with the Recip-e ETK
		programIdentification	String	The identifier of the calling patient program
		mguid	String	The mguid to identify the request
Output Integration Module	Response-entity	Attribute	Type	Description
	PutVisionForPatientResult	putVisionForPatientResultSealed	Byte []	Sealed byte representation of the PutVisionForPatientResult -object.
		status	StatusType	Contains the StatusType-object
	StatusType	code	String	100: ok 300: error occurred
		messageCode	String	The technical code of the error message e.g. error.validation.x.y.z
		messages	String	localised message of the technical code in different languages as a LocalisedString object
		statusUpdater	String	The last statusUpdater in case an operation is not permitted
		prescriptionStatus	String	the current PrescriptionStatus



### 3. GETVISION

Operation Name	<b>GetVision(GetVision)</b>			
Class Name	<b>PatientIntegrationModuleV4</b>			
Description	<p>This operation returns the vision for a given prescription. Possible values for the vision are:</p> <ul style="list-style-type: none"> <li>Null: visible for all pharmacies</li> <li>Value with the structure: Id-Quality. Type: visibility for the given prescription:               <ul style="list-style-type: none"> <li>Id: Nihii value of the executor 62599147</li> <li>Type: String with value NIHII</li> <li>Quality: value is PHARMACY</li> </ul> <p>➔ For example: 62599147-PHARMACY. NIHII</p> </li> <li>Locked: only visible in the pharmacy where the patient presents the (paper) proof of prescription.</li> </ul>			
Errors	<p>Specific exception details are returned in the encrypted part of the response. See <i>StatusType.message</i>. Technical Services Exception such as a Connection failure to the Recip-e server are caught by eHealth and translated into a SOA-fault.</p>			
Inputs Integration Module	Request-entity	Attribute	Type	Description
	GetVisionParam	symmKey	Byte []	The symmetric key to be used by Recip-e to encrypt the response
		rid	String	The Recip-e identifier to update
	GetVision	getVisionParamSealed	Byte[]	GetVisionParam sealed with the Recip-e ETK
		programIdentification	String	The identifier of the calling patient program
		mguid	String	The mguid to identify the request
Output Integration Module	Response-entity	Attribute	Type	Description
	GetVisionResponse	getVisionResultSealed	Byte []	Sealed byte representation of the GetVisionResult-object. Unseal with the symmetric key from the GetVisionParam.

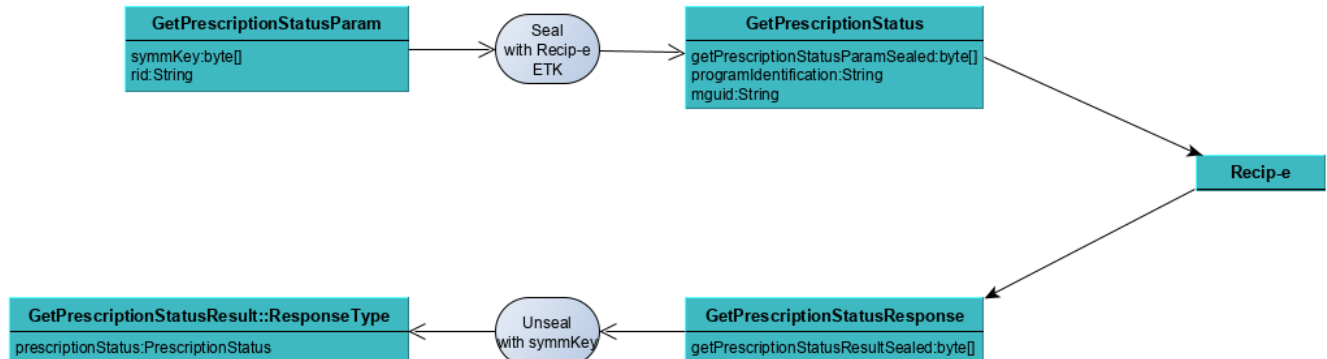
	<i>GetVisionResult</i>	<i>status</i>	StatusType	Contains the StatusType-object
		<i>vision</i>	String	The vision of the prescription
	StatusType	<i>code</i>	String	100: ok 300: error occurred
		<i>messageCode</i>	String	The technical code of the error message e.g. error.validation.x.y.z
		<i>messages</i>	String	localised message of the technical code in different languages as a LocalisedString
		<i>statusUpdater</i>	String	The last statusupdater in case an operation is not permitted
		<i>prescriptionStatus</i>	String	the current PrescriptionStatus



#### 4. GETPRESCRIPTIONSTATUS

<b>Operation Name</b>	<i>GetPrescriptionStatus(GetPrescriptionStatus)</i>			
<b>Class Name</b>	<i>PatientIntegrationModuleV4</i>			
<b>Description</b>	<i>This function retrieves the status of a prescription.</i>			
<b>Errors</b>	<i>Specific exception details are returned in the encrypted part of the response. See StatusType.message. Technical Services Exception such as a Connection failure to the Recip-e server are caught by eHealth and translated into a SOA-fault.</i>			
<b>Inputs Integration Module</b>	<b>Request-entity</b>	<b>Attribute</b>	<b>Type</b>	<b>Description</b>
	<i>GetPrescriptionStatusParam</i>	<i>symmKey</i>	Byte []	The symmetric key to be used by Recip-e to encrypt the response
		<i>rid</i>	String	The Recip-e identifier
	<i>GetPrescriptionStatus</i>	<i>getPrescriptionStatusParamSealedByte[]</i>		The GetPrescriptionStatusParam-object sealed with the Recip-e ETK
		<i>programIdentification</i>	String	The identifier of the calling patient program

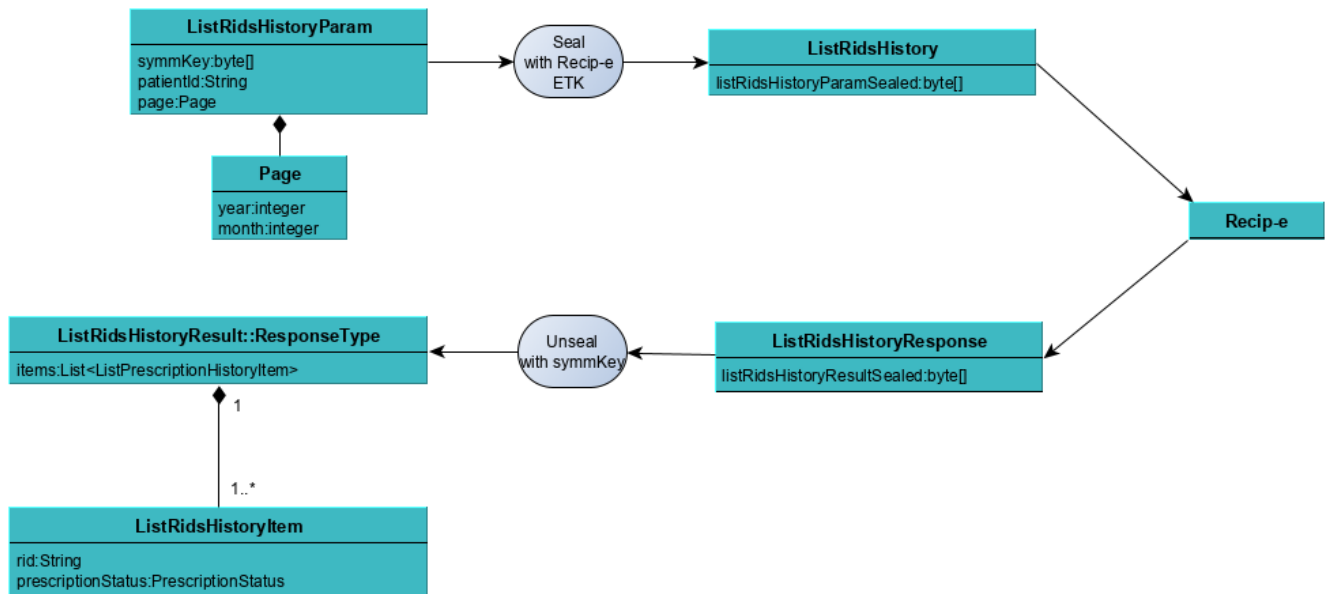
		<i>mguid</i>	<i>String</i>	<i>The mguid to identify the request</i>
<b>Output Integration Module</b>	<b>Response-entity</b>	<b>Attribute</b>	<b>Type</b>	<b>Description</b>
	<i>GetPrescriptionStatusResponse</i>	<i>getPrescriptionStatusResultSealed</i>	<i>Byte []</i>	<i>Sealed byte representation of the GetPrescriptionStatusResult-object. Unseal with the symmetric key from the GetPrescriptionStatusParam-object.</i>
	<i>GetPrescriptionStatusResult</i>	<i>status</i>	<i>StatusType</i>	<i>Contains the StatusType-object</i>
		<i>prescriptionStatus</i>	<i>PrescriptionStatus</i>	<i>The status of the prescription</i>
	<i>StatusType</i>	<i>code</i>	<i>String</i>	<i>100: ok 300: error occurred</i>
		<i>messageCode</i>	<i>String</i>	<i>The technical code of the error message e.g. error.validation.x.y.z</i>
		<i>messages</i>	<i>String</i>	<i>localised message of the technical code in different languages as a LocalisedString object</i>
		<i>statusUpdater</i>	<i>String</i>	<i>The last statusupdater in case an operation is not permitted</i>
		<i>prescriptionStatus</i>	<i>String</i>	<i>the current PrescriptionStatus</i>



## 5. LISTRIDSHISTORY

<b>Operation Name</b>	<i>ListRidsHistory(ListRidsHistory)</i>			
<b>Class Name</b>	<i>PatientIntegrationModuleV4</i>			
<b>Description</b>	<i>This function returns a list of Recip-e identifiers and their statuses for a given patientId.</i>			
<b>Errors</b>	<i>Specific exceptiondetails are returned in the encrypted part of the response. See StatusType.message. Technical Services Exception such as a Connection failure to the Recip-e server are caught by eHealth and translated into a SOA-fault.</i>			
<b>Inputs Integration Module</b>	<b>Request-entity</b>	<b>Attribute</b>	<b>Type</b>	<b>Description</b>
	<i>ListRidsHistoryParam</i>	<i>symmKey</i>	<i>Byte []</i>	<i>The symmetric key to be used by Recip-e to encrypt the response</i>
		<i>patientId</i>	<i>String</i>	<i>The patientId identifier</i>

		<i>activeResults</i>	<i>Boolean</i>	<i>Flag indicating to query the active or historical partition</i>
		<i>page(optional)</i>	<i>Page</i>	<i>The page to return (by default: the current month).</i>
		<i>session(optional)</i>	<i>Session</i>	<i>The session is returned by the server and is contained in the first paging response. This object facilitates faster processing on the server of subsequent listrequests by storing operation specific state</i>
	<i>Page</i>	<i>Month(unused)</i>	<i>int</i>	<i>The month of interest</i>
		<i>year(unused)</i>	<i>int</i>	<i>The year of interest</i>
		<i>pageNumber</i>	<i>int</i>	<i>The pagination number</i>
	<i>Session</i>		<i>byte []</i>	<i>The session context. This object is unreadable for the client.</i>
	<i>ListRidsHistory</i>	<i>ListRidsHistoryParamSealed</i>	<i>Byte[]</i>	<i>The ListRidsHistoryParam-object sealed with the Recip-e ETk</i>
		<i>programIdentification</i>	<i>String</i>	<i>The identifier of the calling patient program</i>
<b>Output Integration Module</b>		<i>mguid</i>	<i>String</i>	<i>The mguid to identify the</i>
	<b>Response-entity</b>	<b>Attribute</b>	<b>Type</b>	<b>Description</b>
	<i>ListRidsHistoryResponse</i>	<i>getPrescriptionStatusResultSealed</i>	<i>Byte []</i>	<i>Sealed byte representation of the ListRidsHistoryResult-object. Unseal with the symmetric key</i>
	<i>ListRidsHistoryResult</i>	<i>status</i>	<i>StatusType</i>	<i>Contains the StatusType-object</i>
		<i>items</i>	<i>List</i>	<i>The list of ListRidsHistoryItem-objects</i>
		<i>hasMoreResults</i>	<i>Boolean</i>	<i>Flag indicating if there are more results</i>
		<i>session</i>	<i>Session</i>	<i>The session is returned by the server and is contained in the first paging response. This object facilitates faster processing on the server of subsequent listrequests by storing operation specific state.</i>
	<i>ListRidsHistoryItem</i>	<i>rid</i>	<i>String</i>	<i>The Recip-e identifier</i>
		<i>prescriptionStatus</i>	<i>PrescriptionStatus</i>	<i>The prescription status of the Recip-e identifier</i>
	<i>StatusType</i>	<i>code</i>	<i>String</i>	<i>100: ok 300: error occurred</i>
		<i>messageCode</i>	<i>String</i>	<i>The technical code of the error message e.g. error.validation.x.y.z</i>
		<i>messages</i>	<i>String</i>	<i>localised message of the</i>
		<i>statusUpdater</i>	<i>String</i>	<i>The last statusupdater in case an operation is not permitted</i>
		<i>prescriptionStatus</i>	<i>String</i>	<i>the current PrescriptionStatus</i>

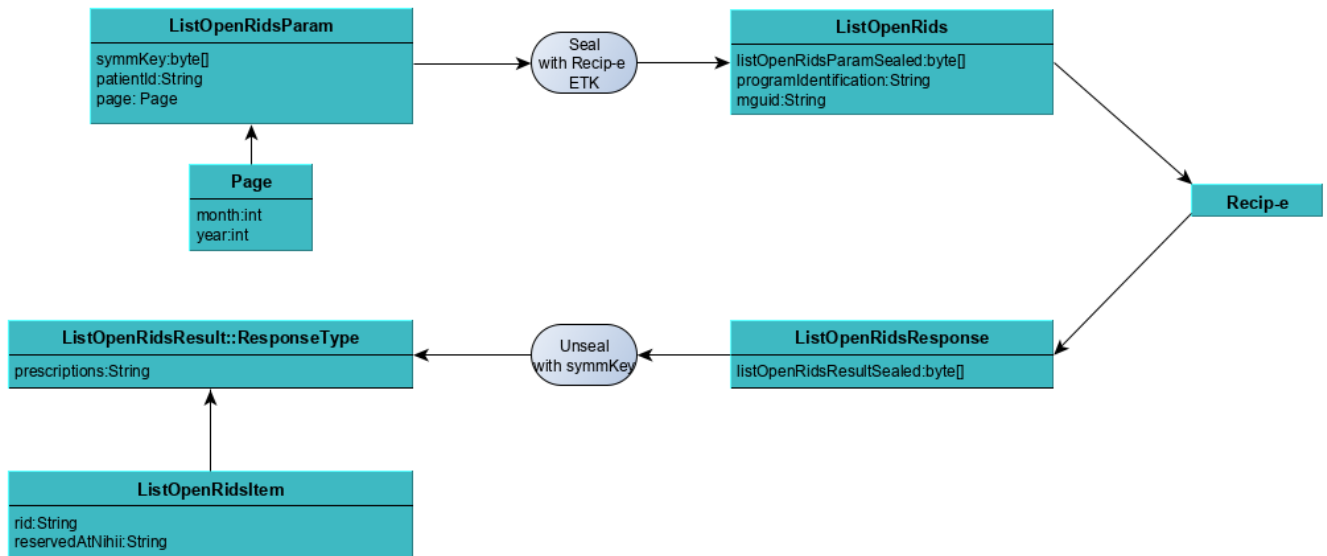


## 6. LISTOPENRIDS

Operation Name	<b>ListOpenRids(ListOpenRids)</b>			
Class Name	<b>PatientIntegrationModuleV4</b>			
Description	This function returns a list of Recip-e identifiers for the prescriptions with the status NotDelivered.			
Errors	Specific exception details are returned in the encrypted part of the response. See <i>StatusType.message</i> . Technical Services Exception such as a Connection failure to the Recip-e server are caught by eHealth and translated into a SOA-fault.			
Inputs Integration Module	Request-entity	Attribute	Type	Description
	ListOpenRidsParam	symmKey	Byte []	The symmetric key to be used by Recip-e to encrypt the response
		patientId	String	The patient identification
		page(optional)	Page	The page to return (by default: Page 0).
		session(optional)	Session	The session is returned by the server and is contained in the first paging response. This object facilitates faster processing on the server of subsequent listrequests by storing operation specific state.
	Page	Month(unused)	int	The month of interest
		year(unused)	int	The year of interest
		pageNumber	int	The pagination number
	Session		byte []	The session context. This object is unreadable for the client.
	ListOpenRids	ListOpenRidsParamSealed	Byte[]	The ListOpenRidsParam-object with the Recip-e ETK

		<i>programIdentification</i>	<i>String</i>	<i>The identifier of the calling patient program</i>
		<i>mguid</i>	<i>String</i>	<i>The mguid to identify the request</i>
<b>Output Integration Module</b>	<b>Response-entity</b>	<b>Attribute</b>	<b>Type</b>	<b>Description</b>
	<i>ListOpenRidsResponse</i>	<i>ListOpenRidsResultSealed</i>	<i>Byte []</i>	<i>Sealed byte representation of the ListOpenRidsResult-object. Unseal with the symmetric key from the request-parameters.</i>
	<i>ListOpenRidsResult</i>	<i>status</i>	<i>StatusType</i>	<i>Contains the StatusType-object</i>
		<i>items</i>	<i>List</i>	<i>The list of ListOpenRidsResultItem-objects</i>
		<i>hasMoreResults</i>	<i>Boolean</i>	<i>Flag indicating if there are more results</i>
		<i>session</i>	<i>Session</i>	<i>The session is returned by the server and is contained in the first paging response. This object facilitates faster processing on the server of subsequent listrequests by storing operation specific state.</i>
	<i>ListOpenRidsResultItem</i>	<i>rid</i>	<i>String</i>	<i>The Recipe identifier</i>
		<i>reservedAtNihii</i>	<i>String</i>	<i>The nihii of the executor if the prescription is reserved.</i>
		<i>vision</i>	<i>String</i>	<i>The vision of the reserved prescription</i>
		<i>creationdate</i>	<i>Calendar</i>	<i>The creationdate of the prescription</i>
		<i>expirationDate</i>	<i>Calendar</i>	<i>The expirationdate of the prescription</i>
		<i>prescriptionStatus</i>	<i>PrescriptionStatus</i>	<i>The status of the prescription</i>
		<i>patientId</i>	<i>String</i>	<i>The patient identifier</i>
		<i>prescriberId</i>	<i>String</i>	<i>The prescriber identifier</i>
		<i>emailAddress</i>	<i>String</i>	<i>The preferred email address</i>
		<i>telephoneNumber</i>		<i>The preferred telephone number</i>
		<i>contactPreference</i>	<i>ContactPreference</i>	<i>The preferred contact. (possible values are defined in the reference recipe-core.xsd file under the simpleType: contactPreference)</i>
	<i>StatusType</i>	<i>code</i>	<i>String</i>	<i>100: ok 300: error occurred</i>
		<i>messageCode</i>	<i>String</i>	<i>The technical code of the error message e.g. error.validation.x.y.z</i>
		<i>messages</i>	<i>String</i>	<i>localised message of the technical code in different languages as a LocalisedString object</i>
		<i>statusUpdater</i>	<i>String</i>	<i>The last statusupdater in case an operation is not permitted</i>
		<i>prescriptionStatus</i>	<i>String</i>	<i>the current PrescriptionStatus</i>

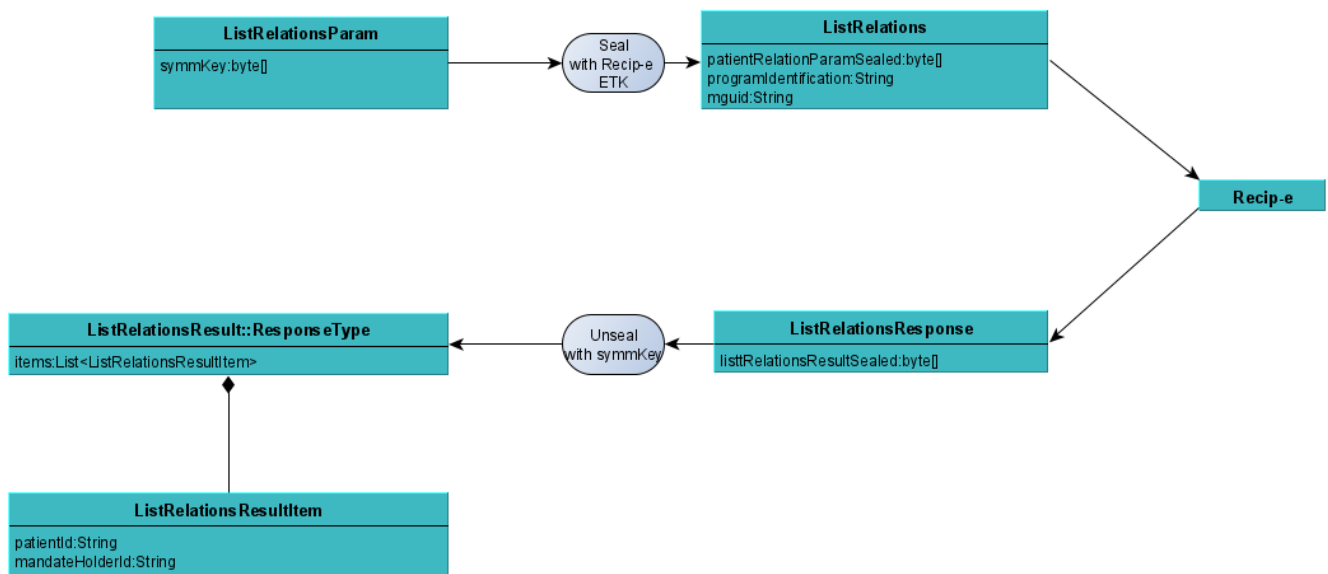




## 7. LISTRELATIONS

Operation Name	<b>ListRelations(ListRelation)</b>			
Class Name	<b>PatientIntegrationModuleV4</b>			
Description	This operation returns a list of ListRelationsItem-entities.			
Errors	Specific exception details are returned in the encrypted part of the response. See <i>StatusType.message</i> . Technical Services Exception such as a Connection failure to the Recip-e server are caught by eHealth and translated into a SOA-fault.			
Inputs Integration Module	Request-entity	Attribute	Type	Description
	ListRelationsParam	symmKey	Byte []	The symmetric key to be used by Recip-e to
	ListRelations	patientRelationParamSealed	Byte []	The ListRelationParam-object with the Recip-e ETK
		programIdentification	String	The identifier of the calling patient program
		mguid	String	The mguid to identify the request
Output Integration Module	Response-entity	Attribute	Type	Description
	ListRelationsResponse	patientRelationResultSealed	Byte []	Sealed byte representation of the ListRelationResult-object. Unseal with the symmetric key from the request-parameters.
	ListRelationsResult	status	StatusType	Contains the StatusType-object
		items	List	The list of ListRelationsResultItem-objects
	ListRelationsItem	patientId	String	The patientId who mandates the linkedPatientId
		firstname	String	

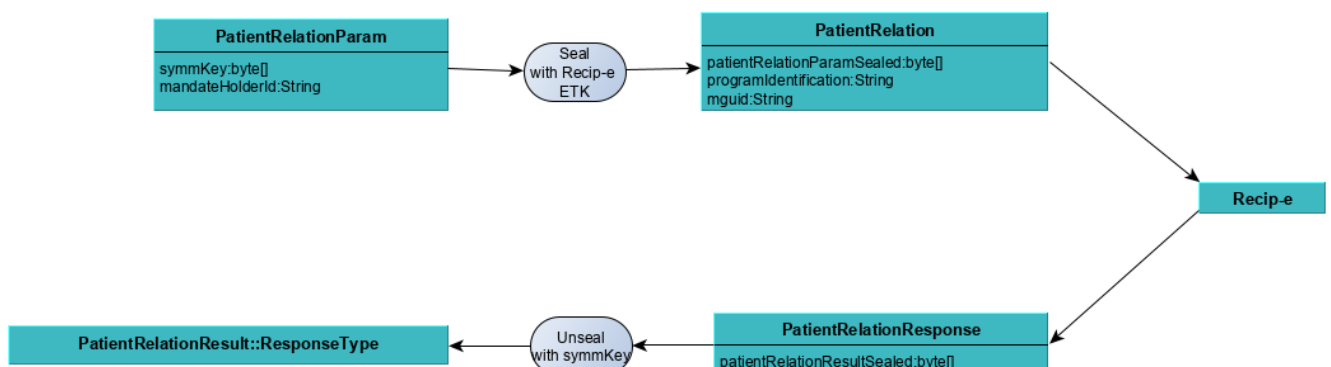
		<i>lastname</i>	String	
		<i>mandateHolderId</i>	String	<i>The mandate holder of the patient</i>
		<i>enddate</i>	Calendar	<i>The (optional) enddate of the relation</i>
	<i>StatusType</i>	<i>code</i>	String	100: ok 300: error occurred
		<i>messageCode</i>	String	<i>The technical code of the error message e.g. error.validation.x.y.z</i>
		<i>messages</i>	String	<i>localised message of the technical code in different languages as a LocalisedString object</i>
		<i>statusUpdater</i>	String	<i>The last statusupdater in case an operation is not permitted</i>
		<i>prescriptionStatus</i>	String	<i>the current PrescriptionStatus</i>



## 8. CREATERELATION

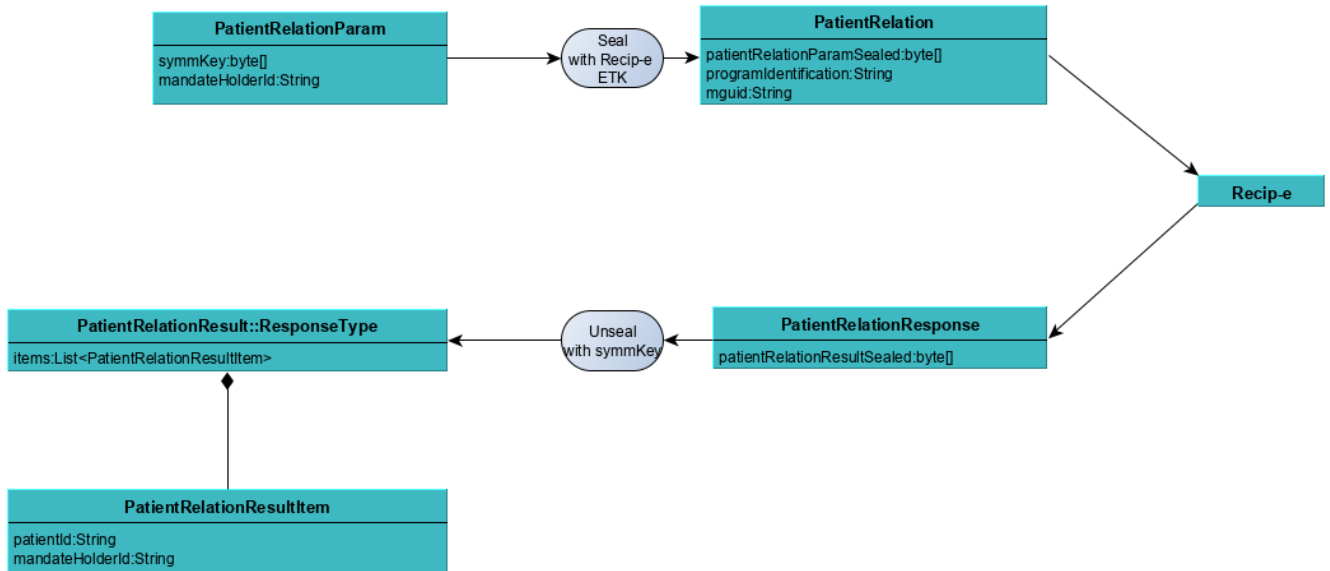
<b>Operation Name</b>	<b>CreateRelation(CreateRelation)</b>			
<b>Class Name</b>	<b>PatientIntegrationModuleV4</b>			
<b>Description</b>	<i>This operation creates a PatientRelation-entity.</i>			
<b>Errors</b>	<i>Specific exceptiondetails are returned in the encrypted part of the response. See StatusType.message. Technical Services Exception such as a Connection failure to the Recip-e server are caught by eHealth and translated into a SOA-fault.</i>			
<b>Inputs Integration Module</b>	<b>Request-entity</b>	<b>Attribute</b>	<b>Type</b>	<b>Description</b>
	CreateRelationParam	symmKey	Byte []	The symmetric key to be used by Recip-e to

		<i>mandateHolderId</i>	<i>String</i>	<i>The mandate holder of the patient</i>
	<i>CreateRelation</i>	<i>patientRelationParamSealed</i>	<i>Byte[]</i>	<i>The CreateRelationParam-object with the Recip-e ETK</i>
		<i>programIdentification</i>	<i>String</i>	<i>The identifier of the calling patient program</i>
		<i>mguid</i>	<i>String</i>	<i>The mguid to identify the request</i>
	<i>ListRelationsItem</i>	<i>patientId</i>	<i>String</i>	<i>The patientId who mandates the</i>
		<i>firstname</i>	<i>String</i>	
		<i>lastname</i>	<i>String</i>	
		<i>mandateHolderId</i>	<i>String</i>	<i>The mandate holder of the patient</i>
		<i>enddate</i>	<i>Calendar</i>	<i>The (optional) enddate of the relation</i>
<b>Output Integration Module</b>	<b>Response-entity</b>	<b>Attribute</b>	<b>Type</b>	<b>Description</b>
	<i>CreateRelationResponse</i>	<i>patientRelationResultSealed</i>	<i>Byte []</i>	<i>Sealed byte representation of the CreateRelationResult-object. Unseal with the symmetric key from the request-parameters.</i>
	<i>CreateRelationResult</i>	<i>status</i>	<i>StatusType</i>	<i>Contains the StatusType-object</i>
	<i>StatusType</i>	<i>code</i>	<i>String</i>	<i>100: ok 300: error occurred</i>
		<i>messageCode</i>	<i>String</i>	<i>The technical code of the error message e.g. error.validation.x.y.z</i>
		<i>messages</i>	<i>String</i>	<i>localised message of the technical code in different languages as a LocalisedString object</i>
		<i>statusUpdater</i>	<i>String</i>	<i>The last statusupdater in case an operation is not permitted</i>
		<i>prescriptionStatus</i>	<i>String</i>	<i>the current PrescriptionStatus</i>



## 9. REVOKERELATION

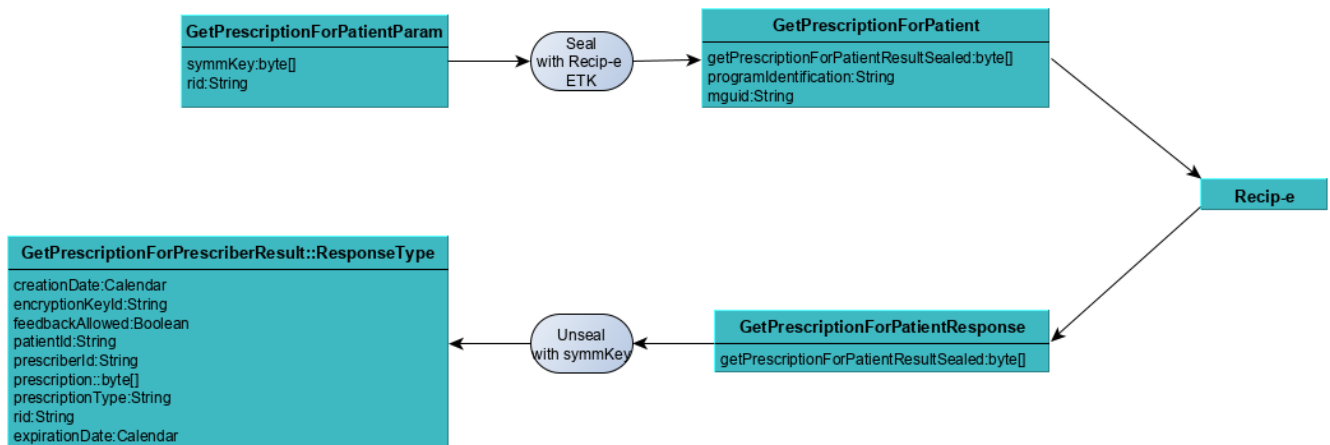
<b>Operation Name</b>	<b><i>RevokeRelation(RevokeRelation)</i></b>			
<b>Class Name</b>	<b><i>PatientIntegrationModuleV4</i></b>			
<b>Description</b>	<i>This operations revokes a PatientRelation-entities.</i>			
<b>Errors</b>	<i>Specific exceptiondetails are returned in the encrypted part of the response. See <i>StatusType.message</i>. Technical Services Exception such as a Connection failure to the Recip-e server are caught by eHealth and translated into a SOA-fault.</i>			
<b>Inputs Integration Module</b>	<b>Request-entity</b>	<b>Attribute</b>	<b>Type</b>	<b>Description</b>
	<i>RevokeRelationParam</i>	<i>symmKey</i>	<i>Byte []</i>	<i>The symmetric key to be used by Recip-e to</i>
		<i>mandateHolderId</i>	<i>String</i>	<i>The mandate holder of the patient</i>
	<i>RevokeRelation</i>	<i>patientRelationParamSealed</i>	<i>Byte[]</i>	<i>The RevokeRelationParam-object with the Recip-e ETK</i>
		<i>programIdentification</i>	<i>String</i>	<i>The identifier of the calling patient program</i>
		<i>mguid</i>	<i>String</i>	<i>The mguid to identify the request</i>
<b>Output Integration Module</b>	<b>Response-entity</b>	<b>Attribute</b>	<b>Type</b>	<b>Description</b>
	<i>RevokeRelationResponse</i>	<i>patientRelationResultSealed</i>	<i>Byte []</i>	<i>Sealed byte representation of the RevokeRelationResult-object. Unseal with the symmetric key from the request-parameters.</i>
	<i>RevokeRelationResult</i>	<i>status</i>	<i>StatusType</i>	<i>Contains the StatusType-object</i>
	<i>StatusType</i>	<i>code</i>	<i>String</i>	<i>100: ok 300: error occurred</i>
		<i>messageCode</i>	<i>String</i>	<i>The technical code of the error message e.g. error.validation.x.y.z</i>
		<i>messages</i>	<i>String</i>	<i>localised message of the technical code in different languages as a LocalisedString object</i>
		<i>statusUpdater</i>	<i>String</i>	<i>The last statusupdater in case an operation is not permitted</i>
		<i>prescriptionStatus</i>	<i>String</i>	<i>the current PrescriptionStatus</i>



## 10. GETPRESCRIPTION

<b>Operation Name</b>	<b><i>getPrescription(GetPrescriptionForPatient)</i></b>			
<b>Class Name</b>	<b><i>PatientIntegrationModuleV4</i></b>			
<b>Description</b>	<i>This operation returns a prescription for a given Recip-e identifier. This operation does not modify the status of the prescription to InProcess.</i>			
<b>Errors</b>	<i>Specific exception details are returned in the encrypted part of the response. See <i>StatusType.message</i>. Technical Services Exception such as a Connection failure to the Recip-e server are caught by eHealth and translated into a SOA-fault.</i>			
<b>Inputs Integration Module</b>	<b>Request-entity</b>	<b>Attribute</b>	<b>Type</b>	<b>Description</b>
	<i>GetPrescriptionForPatientParam</i>	<i>symmKey</i>	<i>Byte []</i>	<i>The symmetric key to be used by Recip-e to encrypt the response</i>
		<i>rid</i>	<i>String</i>	<i>The Recip-e identifier</i>
	<i>GetPrescriptionForPatient</i>	<i>getPrescriptionForPatientParamSealed</i>	<i>Byte[]</i>	<i>The GetPrescriptionForPatientParam-object with the Recip-e ETK</i>
		<i>disablePatientInsurabilityCheckParam</i>	<i>Boolean</i>	<i>Flag to disable the insurability check</i>
		<i>programIdentification</i>	<i>String</i>	<i>The identifier of the calling patient program</i>
		<i>mguid</i>	<i>String</i>	<i>The mguid to identify the request</i>
<b>Output Integration Module</b>	<b>Response-entity</b>	<b>Attribute</b>	<b>Type</b>	<b>Description</b>
	<i>GetPrescriptionForPatientResponse</i>	<i>getPrescriptionForPatientResultSealed</i>	<i>Byte []</i>	<i>Sealed byte representation of the GetPrescriptionForPatientResult-object. Unseal with the symmetric key from the request-parameters.</i>
	<i>GetPrescriptionForPatientResult</i>	<i>status</i>	<i>StatusType</i>	<i>Contains the StatusType-object</i>
		<i>creationDate</i>	<i>Calendar</i>	<i>The date of creation</i>
		<i>encryptionKeyId</i>	<i>String</i>	<i>The identifier of the encryption key</i>

		<i>feedbackAllowed</i>	<i>boolean</i>	<i>Flag indicating if feedback is allowed</i>
		<i>patientId</i>	<i>String</i>	<i>The patient identifier</i>
		<i>prescriberId</i>	<i>String</i>	<i>The prescriber identifier</i>
		<i>prescription</i>	<i>Byte []</i>	<i>The encrypted prescription. Use the Kgss encryptionKeyld to decrypt.</i>
		<i>prescriptionType</i>	<i>String</i>	<i>The type of prescription (P0 or P1)</i>
		<i>rid</i>		<i>The Recip-e identifier</i>
		<i>expirationDate</i>	<i>Calendar</i>	<i>The date of expiration</i>
	<i>StatusType</i>	<i>code</i>	<i>String</i>	<i>100: ok 300: error occurred</i>
		<i>messageCode</i>	<i>String</i>	<i>The technical code of the error message e.g. error.validation.x.v.z</i>
		<i>messages</i>	<i>String</i>	<i>localised message of the technical code in different languages as a LocalisedString object</i>
		<i>statusUpdater</i>	<i>String</i>	<i>The last statusupdater in case an operation is not permitted</i>
		<i>prescriptionStatus</i>	<i>String</i>	<i>the current PrescriptionStatus</i>



## 11. LISTOPENPRESCRIPTIONS

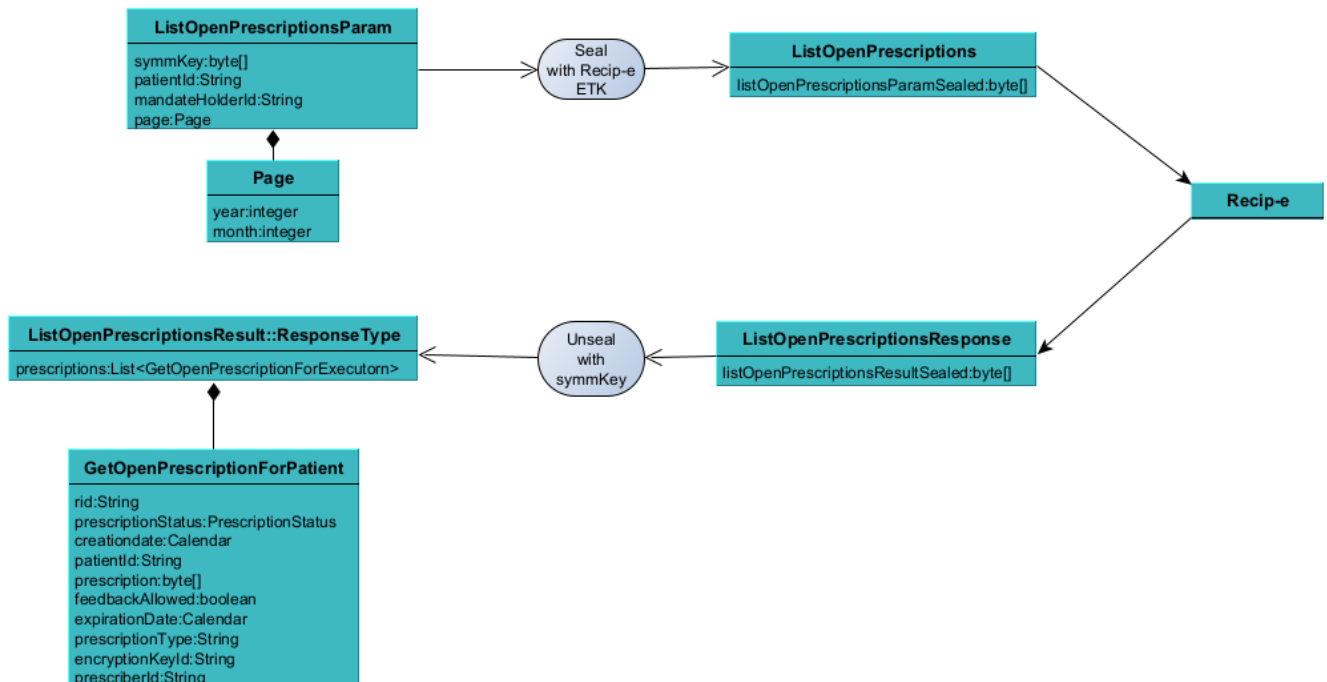
<b>Operation Name</b>	<i>listOpenPrescriptions(ListPatientPrescriptions)</i>
<b>Class Name</b>	<i>PatientIntegrationModuleV4</i>
<b>Description</b>	<i>This operation lists the prescription for a given patient which have the status NotDelivered.</i>

<b>Errors</b>	Specific exception details are returned in the encrypted part of the response. See <i>StatusType.message</i> . Technical Services Exception such as a Connection failure to the Recip-e server are caught by eHealth and translated into a SOA-fault.			
<b>Inputs Integration Module</b>	<b>Request-entity</b>	<b>Attribute</b>	<b>Type</b>	<b>Description</b>
	<i>ListPatientPrescriptionsParam</i>	<i>symmKey</i>	<i>Byte []</i>	The symmetric key to be used by Recip-e to encrypt the response
		<i>page(optional)</i>	<i>Page</i>	The page to return (by default: Page 0).
	<i>ListOpenPrescriptionsRequest</i>	<i>ListOpenPrescriptionsParamSealed</i>	<i>Byte[]</i>	The <i>ListPatientPrescriptionsParam</i> -object sealed with the Recip-e ETK
		<i>programIdentification</i>	<i>String</i>	The identifier of the calling executor program
		<i>mguid</i>	<i>String</i>	The mguid to identify the request
	<i>Page</i>	<i>Month(unused)</i>	<i>int</i>	The month of interest
		<i>year(unused)</i>	<i>int</i>	The year of interest
		<i>pageNumber</i>	<i>int</i>	The pagination number
	<i>Session</i>		<i>byte []</i>	The session context. This object is unreadable for the client.
<b>Output Integration Module</b>	<b>Response-entity</b>	<b>Attribute</b>	<b>Type</b>	<b>Description</b>
	<i>ListOpenPrescriptionsResponse</i>	<i>ListOpenPrescriptionsResultSealed</i>	<i>Byte []</i>	Sealed byte representation of the <i>ListPatientPrescriptionsResult</i> -object. Unseal with the symmetric key from the request.
	<i>ListPatientPrescriptionsResult</i>	<i>status</i>	<i>StatusType</i>	Contains the <i>StatusType</i> -object
		<i>prescriptions</i>	<i>List</i>	List of <i>GetOpenPrescriptionForPatient</i> -objects
		<i>hasMoreResults</i>	<i>Boolean</i>	Flag indicating if there are more results
		<i>session</i>	<i>Session</i>	The session is returned by the server and is contained in the first paging response. This object facilitates faster processing on the server of subsequent listrequests by storing operation specific state.

	<i>GetOpenPrescriptionForPatient</i>	<i>rid</i>	<i>String</i>	<i>The Recip-e identifier</i>
		<i>prescriptionStatus</i>	<i>PrescriptionStatus</i>	<i>The prescription status of the Recip-e identifier</i>
		<i>creationdate</i>	<i>Date</i>	<i>The creation date of the prescription</i>
		<i>patientId</i>	<i>String</i>	<i>The patientId</i>
		<i>prescription</i>	<i>Byte []</i>	<i>The prescription bytes</i>
		<i>feedbackAllowed</i>	<i>Boolean</i>	<i>Flag indicating feedback is allowed or not</i>
		<i>expirationDate</i>	<i>Calendar</i>	<i>The expiration date of the prescription</i>
		<i>prescriptionType</i>	<i>String</i>	<i>The prescription type</i>
		<i>encryptionKeyId</i>	<i>String</i>	<i>The encryption key id</i>
		<i>prescriberId</i>	<i>String</i>	<i>The prescriber id</i>
		<i>emailAddress</i>	<i>String</i>	<i>The preferred email address</i>
		<i>telephoneNumber</i>		<i>The preferred telephone number</i>
		<i>contactPreference</i>	<i>ContactPreference</i>	<i>The preferred contact. (possible values are defined in the recipe-core.xsd file under the simpleType: contactPreference)</i>
	<i>StatusType</i>	<i>statusCode</i>	<i>String</i>	<i>100: ok 300: error occurred</i>
		<i>code</i>	<i>String</i>	<i>The technical code of the error message e.g. error.validation.x.y.z</i>
		<i>message</i>	<i>String</i>	<i>The error message</i>



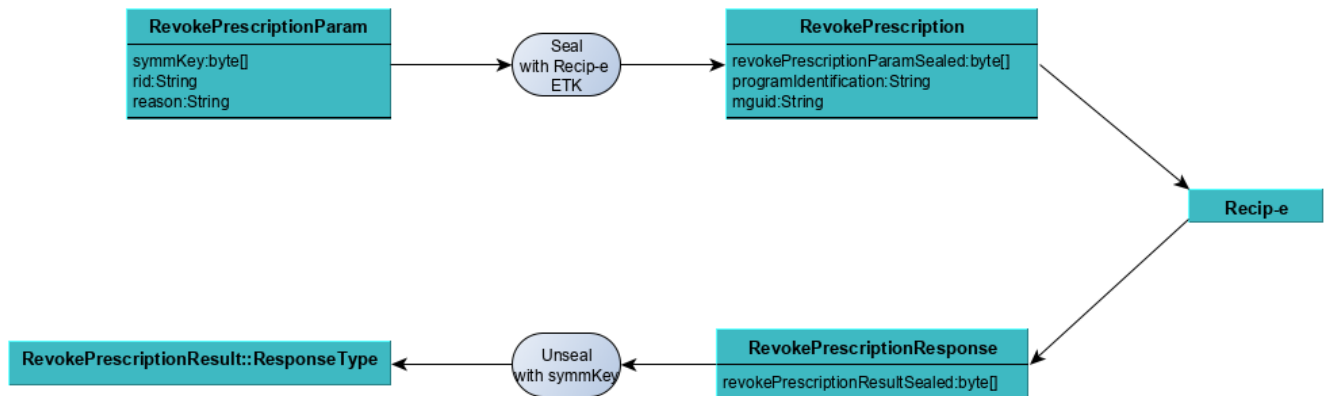
		<i>statusUpdater</i>	<i>String</i>	<i>The last statusUpdater in case an operation is not permitted</i>
--	--	----------------------	---------------	---



## 12. REVOKEPRESCRIPTION

<b>Operation Name</b>	<i>RevokePrescription(RevokePrescription)</i>			
<b>Class Name</b>	<i>PatientIntegrationModuleV4</i>			
<b>Description</b>	<i>This operation revokes a prescription and removes the prescription bytes.</i>			
<b>Errors</b>	<i>Specific exceptiondetails are returned in the encrypted part of the response. See StatusType.message. Technical Services Exception such as a Connection failure to the Recip-e server are caught by eHealth and translated into a SOA-fault.</i>			
<b>Inputs Integration Module</b>	<b>Request-entity</b>	<b>Attribute</b>	<b>Type</b>	<b>Description</b>
	<i>RevokePrescriptionParam</i>	<i>symmKey</i>	<i>Byte []</i>	<i>The symmetric key to be used by Recip-e to encrypt the response</i>
		<i>rid</i>	<i>String</i>	<i>The Recip-e identifier</i>

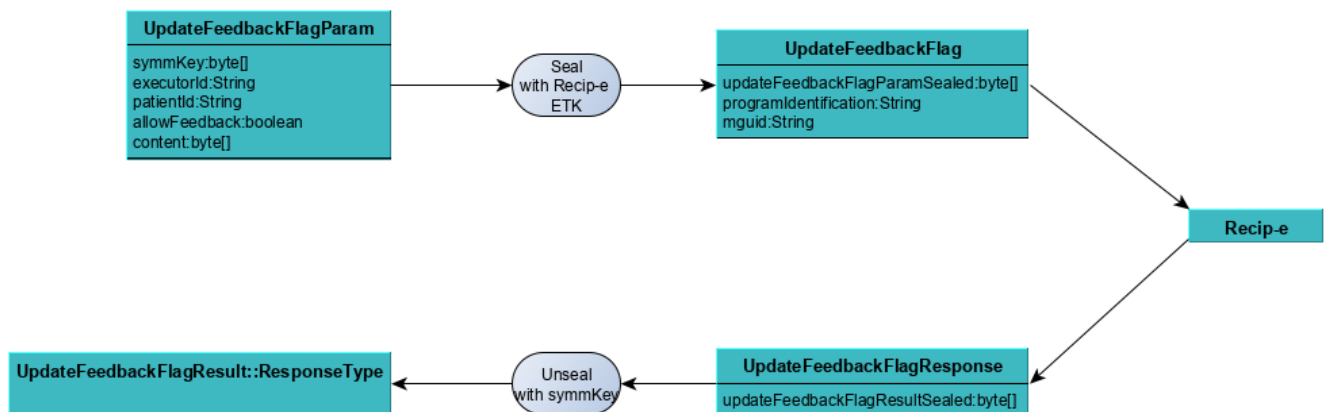
		<i>reason</i>	<i>String</i>	The reason of revocation
	<i>RevokePrescription</i>	<i>revokePrescriptionParamSealed</i>	<i>Byte[]</i>	<i>The RevokePrescriptionParam-object sealed with the Recip-e ETK</i>
		<i>programIdentification</i>	<i>String</i>	<i>The identifier of the calling executor program</i>
		<i>mguid</i>	<i>String</i>	<i>The mguid to identify the request</i>
<b>Output Integration Module</b>	<b>Response-entity</b>	<b>Attribute</b>	<b>Type</b>	<b>Description</b>
	<i>RevokePrescriptionResponse</i>	<i>revokePrescriptionResultSealed</i>	<i>Byte []</i>	<i>Sealed byte representation of the RevokePrescriptionResult-object. Unseal with the symmetric key from the request.</i>
	<i>RevokePrescriptionResult</i>	<i>status</i>	<i>StatusType</i>	<i>Contains the StatusType-object</i>
	<i>StatusType</i>	<i>code</i>	<i>String</i>	<i>100: ok 300: error occurred</i>
		<i>messageCode</i>	<i>String</i>	<i>The technical code of the error message e.g. error.validation.x.y.z</i>
		<i>messages</i>	<i>String</i>	<i>localised message of the technical code in different languages as a LocalisedString object</i>
		<i>statusUpdater</i>	<i>String</i>	<i>The last statusupdater in case an operation is not permitted</i>
		<i>prescriptionStatus</i>	<i>String</i>	<i>the current PrescriptionStatus</i>



### 13. PUTFEEDBACKFLAG

Operation Name	<b>PutFeedbackFlag(UpdateFeedbackFlag)</b>			
Class Name	<b>PatientIntegrationModuleV4</b>			
Description	This operation updates the feedback-flag for a given prescription			
Errors	Specific exception details are returned in the encrypted part of the response. See <i>StatusType.message</i> . Technical Services Exception such as a Connection failure to the Recip-e server are caught by eHealth and translated into a SOA-fault.			
Inputs Integration Module	Request-entity	Attribute	Type	Description
	UpdateFeedbackFlagParam	symmKey	Byte []	The symmetric key to be used by Recip-e to encrypt the response
		rid	String	The Recip-e identifier
		allowFeedback	Boolean	Flag indicating if feedback is allowed.
	PutFeedbackFlag	UpdateFeedbackFlagParamSealed	Byte[]	The UpdateFeedbackFlagParam-object sealed with the Recip-e ETK
		programIdentification	String	The identifier of the calling executor program

		<i>mguid</i>	<i>String</i>	<i>The mguid to identify the request</i>
<b>Output Integration Module</b>	<b>Response-entity</b>	<b>Attribute</b>	<b>Type</b>	<b>Description</b>
	<i>PutFeedbackFlagResponse</i>	<i>UpdateFeedbackFlagResultSealed</i>	<i>Byte []</i>	<i>Sealed byte representation of the UpdateFeedbackFlagResult-object. Unseal with the symmetric key from the request.</i>
	<i>UpdateFeedbackFlagResult</i>	<i>status</i>	<i>StatusType</i>	<i>Contains the StatusType-object</i>
	<i>StatusType</i>	<i>code</i>	<i>String</i>	<i>100: ok 300: error occurred</i>
		<i>messageCode</i>	<i>String</i>	<i>The technical code of the error message e.g. error.validation.x.y.z</i>
		<i>messages</i>	<i>String</i>	<i>localised message of the technical code in different languages as a LocalisedString object</i>
		<i>statusUpdater</i>	<i>String</i>	<i>The last statusupdater in case an operation is not permitted</i>
		<i>prescriptionStatus</i>	<i>String</i>	<i>the current PrescriptionStatus</i>



## 2. Overview of changes of this document

Version Number	Date	Author	Changes (content)	Available as of
Version 1	2019/09/30	Recip-e	Initial version	

Version 2	2019/11/14	Recip-e	<ul style="list-style-type: none"> <li>• Add <i>activeResults</i> to <i>ListRidsHistoryParam</i></li> <li>• <i>ListOpenRidsResultItem</i> contains the following extra fields: <ul style="list-style-type: none"> <li>○ <i>expirationDate</i></li> <li>○ <i>prescriptionStatus</i></li> <li>○ <i>patientId</i></li> <li>○ <i>prescriberId</i></li> </ul> </li> </ul>	<i>Release 2020Q1</i>
Version 3	2020/12/01	Recip-e	<ul style="list-style-type: none"> <li>• Updated <i>ListRelationsParam</i> to reflect changes made, removed <i>mandateHolderId</i></li> </ul>	
Version 4	2021/08/12	Recip-e	Add contact details and preference to <i>CreateReservationParam</i>	<i>Release 2021Q3</i>
Version 5	2021/08/30	Recip-e	Add contact details and preference to <i>ListOpenRidsResultItem</i> and <i>GetOpenPrescriptionForPatient</i>	<i>Release 2021Q3</i>
Version 6	2021/10/18	Recip-e	Update outdated info	<i>Release 2021Q3</i>